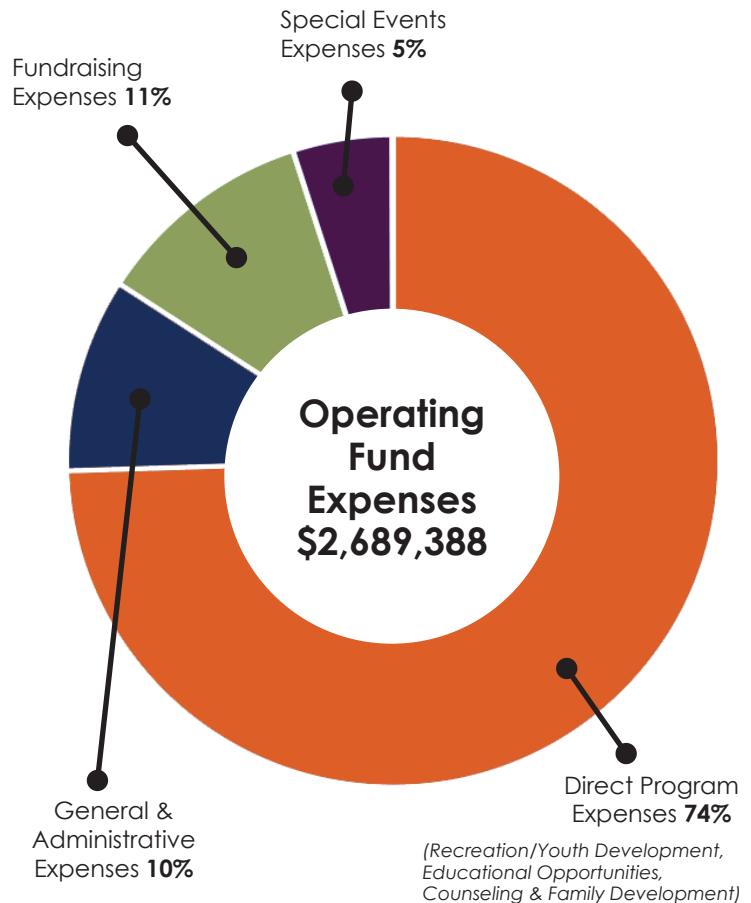
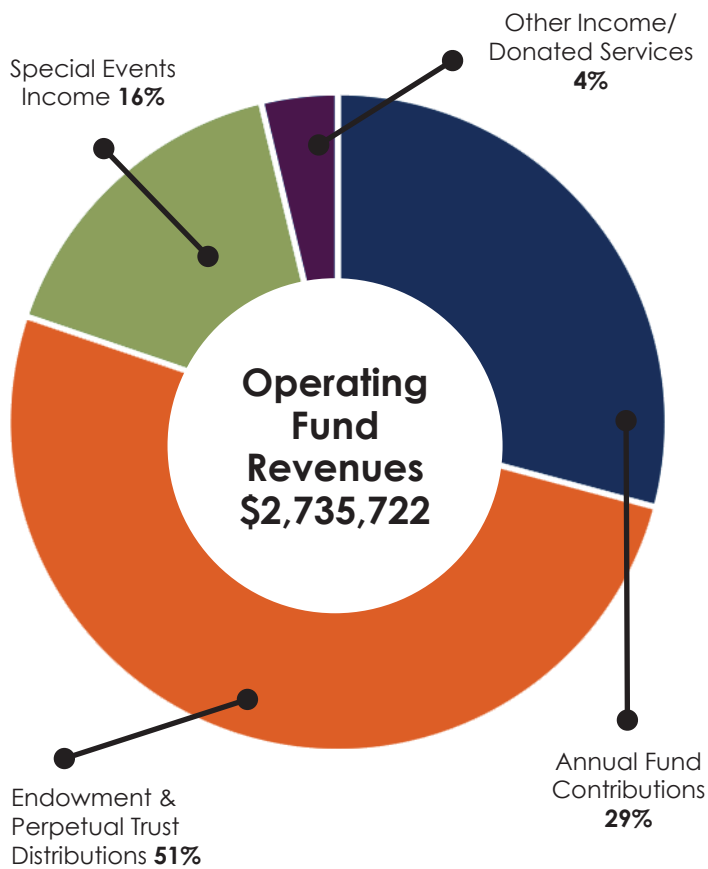


FINANCIAL SUMMARY

THE CABBAGE PATCH SETTLEMENT HOUSE, INC. • OPERATING FUND REVENUES AND EXPENSES

Fiscal Year May 1, 2022 - April 30, 2023



Operating Fund Revenues	Amount
Annual Fund Contributions	\$798,038
Special Events Income	\$438,527
Endowment & Perpetual Trusts Distributions	\$1,396,380
Other Income/Donated Services	\$102,777
Total Operating Fund Revenues	\$2,735,722

Operating Fund Expenses	Amount
Direct Program Expenses <i>(Recreation/Youth Development, Educational Opportunities, Counseling & Family Development)</i>	\$2,003,835
General & Administrative Expenses	\$258,860
Fundraising Expenses	\$292,775
Special Events Expenses	\$132,705
Investment Loss	\$1,213
Total Operating Fund Expenses	\$2,689,388
Change in Net Assets	\$46,334

Total Assets at April 30, 2023 were \$29,149,668, including \$4,436,483 in Property & Equipment, \$16,406,596 in Investments, and \$7,793,038 in Perpetual Trusts.

During the year ending April 30, 2023, Net Investment loss was \$100,545.

For the year, \$421,139 was distributed from the Trusts, decreasing the value of the Trusts by \$233,603.

The Endowment Net Assets decreased by \$280,922, with an increase in Unrestricted Endowment Assets of \$163,928.

Total Net Assets at the year ending April 30, 2023 were \$28,968,483.

The Cabbage Patch is a BBB Accredited Charity meeting all 20 Standards for Charity Accountability and adheres to Generally Accepted Accounting Principles (GAAP).

